

Ezi-cover Acrylic Sealer Undercoat

Ezi-cover acrylic sealer undercoat is professional range water based primer for interior-exterior use. It provides superior adhesion to all top coats.

PRODUCT BENEFITS

Opacity and whiteness:

It delivers good whiteness and good hiding. Improves appearance of top coat.

Anti-chalking:

Does not chalk and can be applied on adequately cured fresh plaster.

Topcoat adhesion:

Provides excellent adhesion to top coat emulsions.

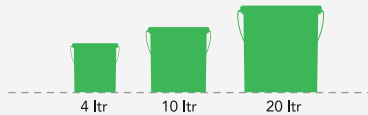
Resists peeling :

Prevents peeling off of top coat emulsions.



PRODUCT FEATURES

AVAILABLE PACKS



COVERAGE



Coverage 12-14 sqm/ltr**

Actual coverage may vary from the quoted coverage due to factors such as method & condition of application and surface roughness and porosity

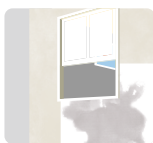
AREAS OF APPLICATION



Interior/Exterior cement surfaces, plasters, ceilings, timber, brick wall, fibre cement boards, asbestos sheets and existing painted surfaces.

HOW TO APPLY

SURFACE PREPARATION



PLASTER

New masonry surfaces must be allowed to cure completely. It is recommended to allow 28 days as the curing time for new masonry surfaces.



CLEANING

Surface should be free from any loose paint, dust or grease. Growths of fungus, algae or moss should be removed by wire brushing and water.



FILLING FOR CRACKS

For filling cracks use APCO Interior/Exterior wall putty or Cement sand mixture in 1:3 proportion.

APPLICATION PROCESS

STEP 1

Stir paint well in a circular lifting motion for 5 minutes before use with a broad flat paddle. Apply two coats of Ezi-cover acrylic undercoat and two coats of APCO Ezi-cover Acrylic finish top coat by using a good quality brush and roller sleeve.

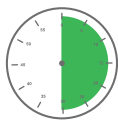
STEP 2

Extra coats may be required for application by brush only. It is also important to avoid using poor quality or worn rollers and brushes as they can adversely affect the final finish

ADDITIONAL INFORMATION

DRYING TIME

TOUCH DRY



30
MINUTES

Gloss level @ 60°:

Matt - 0 - 5 Unit

Method of application: Brush, Roller and Spray

Flammability: Non-flammable

RECOAT



3-4 hours
Recoat

SAFETY PRECAUTION

- > Do not apply when surface temperature is below 10 degree C.
- > Provide adequate ventilation during use.
- > Keep out of reach of children.
- > Check cross cut adhesion of old paint before repainting.
- > In normal condition, a week's curing is required to develop full hardness & resistance properties.
- > Avoid exposure of new paint film to steam for 48 hours and to washing and scrubbing for 7 days.

SAFETY INFORMATION

- > If swallowed give water to dilute. Do not induce vomiting. Get medical attention.
- > EYES: Hold open and flush with running water for at least 15 minutes.
- > Skin: Remove contaminated clothes and wash skin thoroughly with soap and water.
- > Inhalation: Remove to fresh air. If any symptoms persist, seek prompt medical attention.
- > Do not pour left over paint down the drain or water courses.
- > In the event of spill, contain spillage with help of sand, dust or earth.
- > No Added lead, chromium or mercury compounds.
- > Left over paint disposal: Leftover paint/drums should not be disposed in soil/drains.

Consumers should consult a local recycling agency for proper disposal of paints/drums.