



# TIMBERCARE

INTERIOR + EXTERIOR

APCO 

# TIMBERCARE

Apco premium quality timbercare finishes maintain and enhance wooden surfaces so they keep their integrity and good looks. The coatings have been formulated to be most durable for both interiors and exteriors in just the right colours. Brilliant paints, brilliant colours.



**TIMBERCARE NATURAL OIL STAIN** has a pleasant matt finish and translucence that highlights the beauty of wood grains with lovely colour and protects the timber from rotting, fungi and insects by its combined moisture regulating action. Excellent for exterior use on timber cladding and trim, fences and garden furniture, it's also suitable for indoor application.



**TIMBERCARE TRANSTAIN** is a high quality transparent interior wood stain excellent for toning the beauty of timber grain. It enhances the beauty of furniture, cabinets and panelling. Because of its user-friendly touch dry time of 5 minutes and recoat of 30 minutes, this product is excellent where speedy turnaround is required like the finishing of large volumes of wooden furniture.



**TIMBERCARE WOOD ENHANCE ELS** is a premium quality, translucent timber stain. The low solid, satin finish is recommended as a primer before applying Wood Enhance EHS. One coat of single pack Wood Enhance ELS and two coats of Wood Enhance EHS provide durability, substrate protection and beauty. ELS can also be used on its own if multiple coats are applied.



**TIMBERCARE WOOD ENHANCE EHS** is a premium quality translucent exterior satin timber finish that can be used indoors. The high solids in the formulation in this single pack product enhance the wood grain. The UV absorber and transparent iron oxides offer maximum durability and resistance to the damaging impact of UV rays. Apply Timbercare Wood Enhance ELS as a primer.



**TIMBERCARE SOLID OIL STAIN** hides the wood grain and covers the timber with colour depth and a pleasant velvety texture. Solid Oil Stain is self priming and penetrates deep into the wood and so provides excellent water repelling properties. Solid Oil Stain can be used indoors and excels in exterior application on walls, trim, fences and garden furniture.

## TIMBERCARE

### DEEP COLOUR FINISH WOOD ENHANCE & SOLID OIL STAIN



BLACKWOOD\*



TOBACCO BROWN



BURMESE TEAK



MAPLE\*



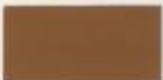
BUNGALOW BROWN



DARK OAK\*



WALNUT\*



INDIAN TOBACCO



MISSION BROWN



RANCHWOOD



PACIFIC



MUSHROOM



REDWOOD



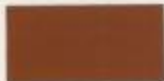
FIR PINE



PALE OLIVE



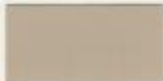
PORCELAIN



TEAK\*



VITI GREEN



SAND BANK



BUTTERMILK

\* only shades available in ELS & EHS

## TIMBERCARE

### TRANSPARENT FINISH TRANSTAIN & NATURAL OIL STAIN



MAHOGANY



FIR PINE\*



CEDAR



SANDALWOOD



BURNT OLIVE



HONEY GOLD



GOLDEN OAK



INDIAN TEAK



ROSEWOOD



MAPLE



WALNUT



WHITE PINE

\* available only in natural oil stain





Apco architectural coatings offer the best paint solutions for all surfaces. visit [www.apcocoatings.com](http://www.apcocoatings.com)



# APCO

## AUSTRALIA BRISBANE

Phone: + 61 7 3355 3066  
 Fax: + 61 7 3355 5194  
[contact.australia@apcocoatings.com](mailto:contact.australia@apcocoatings.com)

## SYDNEY

Phone: + 61 2 9832 0000  
 Fax: + 61 2 9677 0566  
[contact.australia@apcocoatings.com](mailto:contact.australia@apcocoatings.com)

## FIJI ISLANDS

**LAUTOKA**  
 Phone: + 679 666 3799  
 Fax: + 679 666 3959  
[contact.fiji@apcocoatings.com](mailto:contact.fiji@apcocoatings.com)

## SUVA

Phone: + 679 337 1266  
 Fax: + 679 337 1270  
[contact.fiji@apcocoatings.com](mailto:contact.fiji@apcocoatings.com)

## NEW ZEALAND

**AUCKLAND**  
 Phone: + 649 636 4309  
 Fax: + 649 636 4301  
[contact.newzealand@apcocoatings.com](mailto:contact.newzealand@apcocoatings.com)

## SOLOMON ISLANDS

**HONIARA**  
 Phone: + 677 30685  
 Fax: + 677 30429  
[contact.solomonislands@apcocoatings.com](mailto:contact.solomonislands@apcocoatings.com)

## TONGA

**NIKU'ALOFA**  
 Phone: + 676 24372  
 Fax: + 676 23482  
[contact.tonga@apcocoatings.com](mailto:contact.tonga@apcocoatings.com)

## VANUATU

**PORT VILA**  
 Phone: + 678 25966